



ASSURING PROMPTNESS AND EFFICIENCY ON EVERY PROJECT

CAPITOL DEVELOPMENT DESIGN, INC.

ENGINEERS • PLANNERS • SURVEYORS

SUSTAINABLE, EFFICIENT, ECONOMICAL, AND ENVIRONMENTALLY FRIENDLY SITE DESIGN

## Geotechnical Engineering and Testing Overview



CDDI Geotechnical Lab, Beltsville, MD.

**Geotechnical Engineering** is a part of a variety of services offered through CDDI's Civil Engineering Department.

**CDDI's Geotechnical Engineering** Department provides field subsurface studies, field and laboratory material testing, construction inspections, data analysis and design recommendations for a wide variety of projects.

**CDDI's In-House Geotechnical Laboratory** has been certified by the American Association of State Highway and Transportation Officials (AASHTO) and the American Society for Testing and Materials (ASTM), and is capable of providing standardized material testing for a range

of materials including Aggregates, Concrete, and Soils.

**CDDI's Geotechnical Technicians** are fully certified to perform the tasks required of them. CDDI strictly adheres to AASHTO/ASTM regulations, and has a quality control program that allows us to provide our clients with the tests they require for their projects including Earthwork Monitoring, Field Concrete Sampling, and in place density testing by nuclear gauge.

**CDDI offers:**

- **Geotechnical Engineering**
- **Materials Testing**
- **Construction Inspection**

**CDDI's Geotechnical Lab** is a valued resource, and an unique service offered through Local Minority Business Programs.

Currently, CDDI is working on a Research and Development project with a private sector client to test concrete strength and properties with varying amounts of recycled concrete being used in the mix in place of the standard stone coarse aggregate. The recycled concrete can be obtained at a cost of approximately 25% of the standard stone aggregate which would help realize a substantial savings on concrete. The environmental benefit associated with using recycled concrete would obviously be tremendous.

# Geotechnical Engineering and Testing Projects

Geotechnical Engineering & Testing Services	WMATA King Street Station Improvements	UMD-CP Research Greenhouse Complex	Dulles Airport Runway Reconstruction	Federal Reserve Board Perimeter Security Improvements	National Harbor Wastewater Pumping Station	UMD-CP Practice Field Backfill Operations
	CLIENT					
	Grunley - Walsh	Charles E. Smith Const.	Lane Construction	Grunley - Walsh	WATEK	Clark Companies
Geotechnical Engineering					●	
Materials Testing	●	●	●	●	●	●
Construction Inspection	●	●	●	●	●	●



University of Maryland - College Park, Football Practice Field



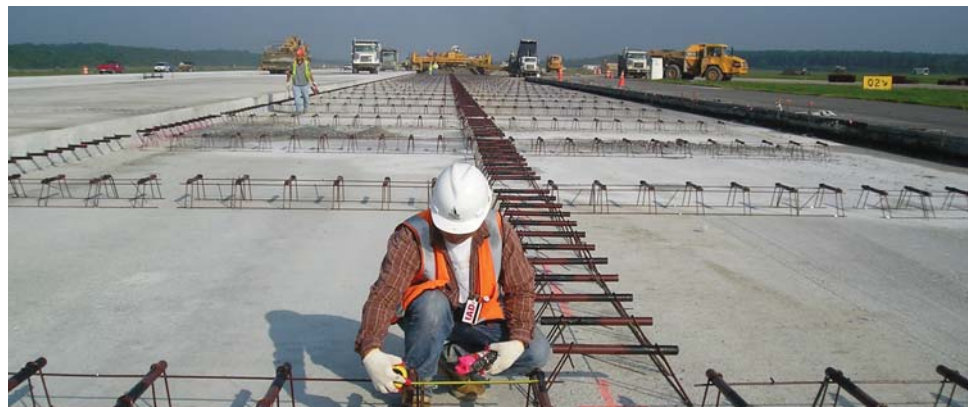
Bowie State University, Student Housing



WMATA, King Street Station Improvements



National Harbor, Wastewater Pumping Station



Dulles International Airport, Runway 12-30 Reconstruction